



City of Coleraine
Coleraine MN
Attn: Harry

McCoy Construction & Forestry is pleased to quote on a new 2020 John Deere 325G equipped as follows:

- 2020 John Deere 325G Compact Track Loader
- Yanmar Turbocharged 4 Cylinder Diesel Engine (74hp)
- Two Speed
- Cab w/ Heat, Air Conditioning, & Defrost
- Switchable E/H Control w/ Performance Package
- Standard Flow Hydraulics (19 GPM)
- Wide 15.8" Zig Zag Style Rubber Tracks
- Power Quick Attach
- 2" Seat Belt w/ Shoulder Strap
- Vinyl Air Suspension Seat
- Cold Start Packager
- Radio AM/FM w/ Bluetooth
- Keyless Start w/ Sealed Switch Module
- HD 78" Construction Bucket w/ Edge
- John Deere 2 Year Full Machine Warranty
- John Deere 1 Year Extended Engine Warranty

Sell Price: **\$52,376**

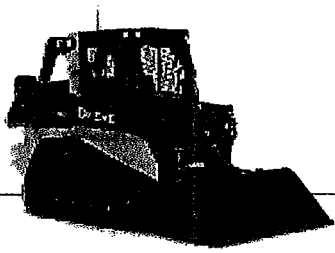
Optional Attachments:

John Deere Worksite Pro BA84C Angle Broom	\$6,154
John Deere Worksite Pro SB78B Standard Flow Snow Blower	\$6,924

- *priced per the Sourcewell Governmental Pricing Contract
- *machine availability is currently 90 days from date of order
- *quote expires in 30 days

Thank you for the opportunity to quote. Please contact me with any questions you may have.

Jordan Thieschafer
Territory Manager
McCoy Construction & Forestry Inc.
218-910-0503



325G SPECIFICATIONS

Engine		325G
Manufacturer and Model	Yanmar 4TNV98CT	Yanmar 4TNV98T
Non-Road Emission Standard	EPA Final Tier 4/EU Stage IV	EPA Interim Tier 4/EU Stage IIIA
Cylinders	4	4
Gross Rated Power (ISO 14396)	54.8 kW (74 hp) at 2,500 rpm	55.0 kW (74 hp) at 2,500 rpm
Net Power (SAE J1349 / ISO 9249)	52.5 kW (70 hp) at 2,500 rpm	52.7 kW (71 hp) at 2,500 rpm
Peak Torque	280 Nm (207 lb.-ft.) at 1,800 rpm	284 Nm (209 lb.-ft.) at 1,800 rpm
Displacement	3.3 L (203 cu. in.)	3.3 L (203 cu. in.)
Rated Engine Speed	2,500 rpm	2,500 rpm
Torque Rise	34% at 1,800 rpm	36% at 1,800 rpm
Aspiration	Turbocharged	Turbocharged
Air Cleaner	Dry dual element	Dry dual element
Cooling		
Fan Type	Variable-speed hydraulic drive standard / reversing fan drive optional	
Powertrain		
Pump	Axial-piston hydrostatic	
Controls	Electrohydraulic	
Travel Speeds		
Single Speed Standard	9.3 km/h (5.8 mph)	
2 Speed, Optional		
Low	8.4 km/h (5.2 mph)	
High	13.2 km/h (8.2 mph)	
Brake	Integral, automatic, spring-applied, hydraulically released wet-disc brake	
Undercarriage		
Rubber Tracks	Smooth-ride long-life rubber with steel inserts	
Track Width		
Standard	320 mm (12.6 in.)	
Optional	400 mm (15.8 in.)	
Ground Pressure		
Standard 320-mm (12.6 in.) Track	39.3 kPa (5.7 psi)	
Optional 400-mm (15.8 in.) Track	32.4 kPa (4.7 psi)	
Track Rollers (per side)	4 triple-flange smooth-ride all-steel rollers	
Track Idlers (per side)	2 double-flange smooth-ride all-steel rollers	
Bearings/Seals (rollers/idlers)	Heavy-duty journal bearings and metal face seals	
Tractive Effort	3859 kgf (8,500 lbf)	
Hydraulics		
Pump Flow		
Standard	70 L/m (19 gpm)	
Total with High-Flow Option	101 L/m (27 gpm)	
System Pressure at Couplers	23 787 kPa (3,450 psi)	
Hydraulic Horsepower Flow (calculated)		
Standard	27.9 kW (37.4 hp)	
High	40.1 kW (53.7 hp)	
Cylinders		
Type	John Deere heat-treated, chrome-plated polished cylinder rods, hardened steel (replaceable bushings) pivot pins	

325G SPECIFICATIONS



Electrical	325G
Voltage	12 volt
Battery Capacity	750 CCA standard / 925 CCA optional
Alternator Rating	75 amp
Lights	Halogen, 2 front and 1 rear

Operator's Station	
ROPS (ISO 3471) / FOPS (ISO 3449) structure with quick-pivot standard	

Serviceability

Refill Capacity	
Fuel Tank	79 L (21 gal.)

Operating Weights

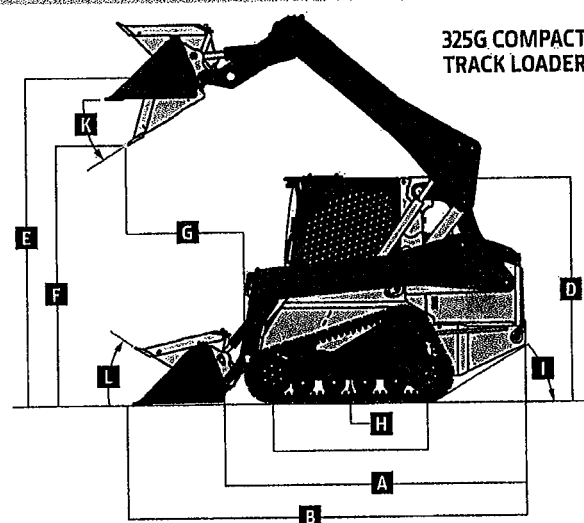
	<i>EPA Final Tier 4/EU Stage IV and EPA Interim Tier 4/EU Stage IIIA</i>
With Standard 320-mm (12.6 in.) Track	4313 kg (9,500 lb.)
With Optional 400-mm (15.8 in.) Track	4381 kg (9,650 lb.)

Machine Dimensions

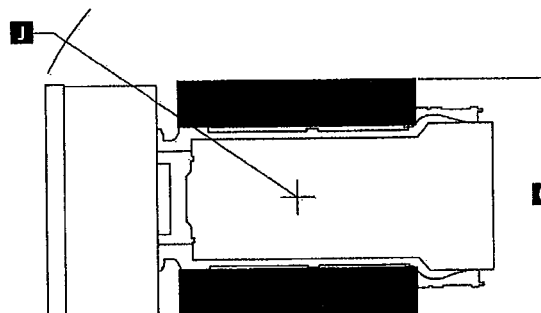
A Length without Bucket	2.85 m (112.3 in.) (9 ft. 4 in.)
B Length with Foundry Bucket	3.46 m (136.3 in.) (11 ft. 4 in.)
C Width without Bucket	
With 320-mm (12.6 in.) Track	1.82 m (71.5 in.) (6 ft. 0 in.)
With 400-mm (15.8 in.) Track	1.90 m (74.7 in.) (6 ft. 3 in.)
D Height to Top of ROPS	2.06 m (81.1 in.) (6 ft. 9 in.)
E Height to Hinge Pin	3.20 m (126.1 in.) (10 ft. 6 in.)
F Dump Height with Foundry Bucket	2.59 m (102.1 in.) (8 ft. 6 in.)
G Dump Reach	
With Foundry Bucket	0.75 m (29.7 in.)
With Construction Bucket with Edge	0.94 m (37 in.) (3 ft. 1 in.)
H Ground Clearance	0.24 m (9.3 in.)
I Angle of Departure	30.5 deg.
J Front Turn Radius with Foundry Bucket	2.03 m (80 in.) (6 ft. 8 in.)
K Dump Angle (full lift height)	41 deg.
L Bucket Rollback (ground level)	34 deg.

Loader Performance

	<i>EPA Final Tier 4/EU Stage IV and EPA Interim Tier 4/EU Stage IIIA</i>
Tipping Load	3360 kg (7,400 lb.)
SAE Rated Operating Capacity with Foundry Bucket	
At 35% Tipping Load	1176 kg (2,590 lb.)
At 50% Tipping Load	1634 kg (3,600 lb.)
Boom Breakout Force	
With Foundry Bucket	2384 kg (5,250 lb.)
With Construction Bucket	2154 kg (4,750 lb.)
Bucket Breakout Force	
With Foundry Bucket	3973 kg (8,750 lb.)
With Construction Bucket	2724 kg (6,000 lb.)



**325G COMPACT
TRACK LOADER**



Additional equipment

Key: ● Standard ▲ Optional or special

See your John Deere dealer for further information.

325G	331G	333G	Engine
●	●	●	Meets EPA Final Tier 4/EU Stage IV emissions
▲			Meets EPA Interim Tier 4/EU Stage IIIA emissions
	▲	▲	Meets EPA Interim Tier 4/EU Stage IIIB emissions
●			Yanmar 4TNV98CT
▲			Yanmar 4TNV98T
	●	●	Yanmar 4TNV94FHT
	▲	▲	Yanmar 4TNV94CHT
●	●	●	Auto-idle
●	●	●	Automatic fan tensioner
●	●	●	Automatic preheat
●	●	●	Electronic injection system
▲	▲	▲	Engine air precleaner kit
●			Fuel tank, 79 L (21 gal.)
	●	●	Fuel tank, 114 L (30 gal.)
●	●	●	John Deere COOL-GARD™ II Extended-Life Engine Coolant
●	●	●	John Deere Plus-50™ 10w30 initial engine oil fill ¹
●			4-cylinder 54.8 kW (74 gross hp)/ 52.5 kW (70 net hp), 3.3-L (203 cu. in.) displacement
	●		4-cylinder 68.0 kW (91.2 gross hp)/ 66.0 kW (88.5 net hp), 3.1-L (186.3 cu. in.) displacement
	●		4-cylinder 74.6 kW (100 gross hp)/ 72.0 kW (96.6 net hp), 3.1-L (186.3 cu. in.) displacement
●	●	●	5-micron primary fuel filter and water separator
▲	▲	▲	Cold-weather starting package
Cooling System			
●	●	●	Coolant surge tank
●	●	●	Variable-speed hydraulically driven fan cooling system
▲	▲	▲	Reversing fan drive
Powertrain			
●	●	●	High-torque heavy-duty planetary-reduction final drive
●	●	●	Automatic spring-applied hydraulically released wet-disc park brake
●	●	●	Wet-disc brakes
●	●	●	Transmission, single speed
▲	●	●	Transmission, 2 speed
Hydraulic System			
●	●	●	John Deere hydraulic cylinders with cushioned boom cylinders
●	●	●	John Deere heat-treated, chrome-plated cylinder rods with replaceable bushings
●	●	●	Connect-under-pressure auxiliary couplers
●	●	●	Quick-check hydraulic fluid-level sight glass
●	●	●	1,000-hour, 5-micron hydraulic filter

325G	331G	333G	Hydraulic System (continued)
▲	▲	▲	High-flow hydraulics
●	●	●	Axial-piston hydrostatic pump
Electrical			
●	●	●	Automatic engine/hydraulic shutdown protection system
●	●	●	Auxiliary hydraulics operator-presence system
●	●	●	Courtesy lighting
●	●	●	Deluxe instrumentation EMU with: Operator-selectable monitoring – Hour meter, engine rpm, battery voltage, diagnostics, EMU configuration, engine coolant temperature, hydraulic oil temperature / LED warning indicators – Glow plug, seat switch, seat belt, door open, auxiliary hydraulics, park brake engaged, 2-speed engaged, stop, low engine oil pressure, engine coolant over-temperature, battery not charging, air filter restriction, and hydraulic filter restriction
▲	▲	▲	Deluxe LED lighting package with additional cab-integrated side lights (2)
●	●	●	Front and rear halogen work lights
●	●	●	Triple-interlock operator-presence control system
●	●	●	Backup alarm
●	●	●	Battery, 750 CCA
▲	●	●	Battery, 925 CCA
●	●	●	Horn
▲	▲	▲	Hazard warning lights
▲	▲	▲	Strobe light, amber
Operator's Station			
●	●	●	Deluxe cab headliner
●	●	●	Electrohydraulic (EH) ISO-pattern joystick controls
▲	▲	▲	ISO-H switchable joystick controls and EH joystick performance package*
	▲	▲	EH 4-way switchable controls include EH foot control, ISO joystick control, H-pattern joystick control, and ISO and foot controls
	▲	▲	ISO controls with programmable detents and EH boom performance package ¹ also includes EH joystick performance package*
	▲	▲	Onboard grade indication: Grade-control option delivers onboard readout within LCD monitor that provides slope of blade (cross-slope direction) and mainfall (fore/aft direction) within ±0.5-percent accuracy
▲	●	●	Keyless-start sealed-switch module with integrated anti-theft system and operator memory preference settings
●	●	●	Electronic push-button auxiliary controls
●	●	●	Pull-down adjustable lap bar
●	●	●	Quick-pivot ROPS
●	●	●	Rear window

325G	331G	333G	Operator's Station (continued)
●	●	●	Removable top window
▲	▲	▲	Sliding/locking/removable glass side windows
●	●	●	ROPS/FOPS operator structure
▲	▲	▲	Glass cab enclosure
●	●	●	Seat belt, 51 mm (2 in.), retractable
▲	▲	▲	Shoulder belt, 51 mm (2 in.) or 76 mm (3 in.)
▲	▲	▲	Severe-duty cab door and wiper system
●	●	●	Water-shedding deluxe vinyl suspension seat
▲	▲	▲	Air-ride cloth, heated seat
▲	▲	▲	Air-ride vinyl seat
●	●	●	12-volt power port / Dome light / Cargo storage / Beverage holder
▲	▲	▲	Air conditioning with heater/defroster
▲	▲	▲	AM/FM radio with auxiliary input and Bluetooth® for audio streaming
▲	▲	▲	Floor mat with left footrest
●	●	●	Rearview mirror
▲	▲	▲	Rearview camera
Loader			
●	●	●	In-cab boom lockout to secure loader before exiting seat
●	●	●	Patented John Deere Quik-Tatch™ (no grease required)
▲	▲	▲	Power Quik-Tatch
●	●	●	Patented John Deere vertical-lift boom
▲	▲	▲	Hydraulic self-leveling on/off and ride control
Other			
●	●	●	Convenient front and rear tie-downs
●	●	●	Environmental drains for all fluid reservoirs
▲	▲	▲	Chromie exhaust stack
▲	▲	▲	Engine oil/hydraulic fluid-sampling kit
▲	▲	▲	Forestry protection packages
▲	▲	▲	Heavy-duty rear grille
▲	▲	▲	Rear counterweights (available in sets of 1, 2, or 3), 78 kg (172 lb.) (each set)
▲	▲	▲	Single-point lift kit
▲	▲	▲	SMV sign kit
●	●	●	Track, 320-mm (12.6 in.) wide
▲	●	▲	Track, 400-mm (15.8 in.) wide
	▲	●	Track, 450-mm (17.7 in.) wide
▲	▲	▲	JOLink™ wireless communication system (available in specific countries; see your dealer for details)

¹500-hour engine oil-change intervals when John Deere Plus-50 oil and John Deere oil filter are used.

*EH joystick performance package features switchable accelerator/decelerator, selectable propel speeds, creep control, boom- and bucket-speed settings, and 12-volt 3- and 14-pin attachment-control harness with dash-mounted 4th-function rocker switch.

¹EH boom performance package features include EH bucket self-level up and down, return to dig, return to carry, and boom-height kick-out.



DKAGCTLL Lithq in U.S.A. (19-04)

Net engine power is with standard equipment including air cleaner, exhaust system, alternator, and cooling fan, at standard conditions per SAE J1349 and DIN 6270B, using No. 2-D fuel at 35 API gravity. Gross power is without cooling fan. Specifications and design subject to change without notice. Wherever applicable, specifications are in accordance with SAE standards. Except where otherwise noted, these specifications are based on units with standard equipment, full fuel tanks, and 79-kg (175-lb.) operator.

JohnDeere.com



Bobcat® of Duluth, Inc.

4610 W Arrowhead Rd
Duluth, MN 55811
(218)727-7377
(218)727-8889 FAX

Customer: City of Coleraine	Date: 4/9/2020
Address:	Tel:
City:	Fax:
State:	Zip Code:

Stock/SN	Make	Model	Description	Quantity	Price
1	Kubota	SVL65-HFWC		1	\$ 47,100.00
			Full Cab W. Heat and Air		
			Joystick Controls		
			16" Rubber Tracks		
			Block Heater, 2 Speed		
			High Flow Hydraulics		
			Suspension Seat, 14 Pin Attachment Kit		
	Land Pride	AP-HD74LLC		1	Inc
			74" Lo Profile Dirt Bucket and Edge		
		AP-SBL2574		1	\$ 6,530.00
			74" Snowblower		
		AP-AB72		1	\$ 4,600.00
			72" Hydraulic Angle Broom		
				Total	\$ 58,230.00

Trade In Equipment		
Stock/ SN	Description	Allowance
Less: Amount Owed to:		0
Net Trade In Allowance:		0

Manufacturers Warranty		Taxable Sub Total	\$ 58,230.00
Years		Sales Tax 0.000%	\$ -
Hours		Loan Filing Fees \$175	
(Whichever Occurs First)		Kubota Insurance	
		Extended Warranty	
Financing / Rebates		Delivery	
Interest Rate	Cash Rebate	Net	\$ 58,230.00
Length of Term		Cash Down	\$ -
Monthly Payment		Balance to Pay or Finance	\$ 58,230.00

Acceptance of Order	
Buyers Signature:	Sellers Name: Bobcat of Duluth
Title:	Sales Rep: Mike Mahoney
Date:	Date:

Equip - to JD-317



City of Coleraine
Coleraine MN
Attn: Harry

McCoy Construction & Forestry is pleased to quote on a new 2020 John Deere 317G equipped as follows:

- 2020 John Deere 317G Compact Track Loader
- Yanmar Turbocharged 4 Cylinder Diesel Engine (65hp)
- Single Speed
- Cab w/ Heat, Air Conditioning, & Defrost
- Switchable E/H Control w/ Performance Package
- Standard Flow Hydraulics (16 GPM)
- Wide 15.8" Zig Zag Style Rubber Tracks
- 2" Seat Belt w/ Shoulder Strap
- Vinyl Air Suspension Seat
- Cold Start Packager
- Radio AM/FM w/ Bluetooth
- Keyless Start w/ Sealed Switch Module
- 72" Construction Bucket w/ Edge
- John Deere 2 Year Full Machine Warranty
- John Deere 1 Year Extended Engine Warranty

Sell Price:

\$48,549

*priced per the Sourcewell Governmental Pricing Contract
*machine availability is currently 90 days from date of order
*quote expires in 30 days

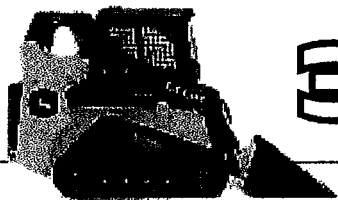
Optional Attachments:

John Deere Worksite Pro BA72C Angle Broom
John Deere Worksite Pro SB72B Snow Blower

\$5,989
\$6,248

Thank you for the opportunity to quote. Please contact me with any questions you may have.

Jordan Thieschafer
Territory Manager
McCoy Construction & Forestry Inc.
218-910-0503



317G

SPECIFICATIONS

Engine	317G
Manufacturer and Model	Yanmar 4TNV86CHT
Non-Road Emission Standard	EPA Final Tier 4/EU Stage IV
Cylinders	4
Net Power (SAE J1349 / ISO 9249)	45.6 kW (61 hp) at 2,600 rpm
Gross Rated Power (ISO 14396)	48.5 kW (65 hp) at 2,600 rpm
Peak Torque	207 Nm (153 ft.-lb.) at 1,690 rpm
Displacement	2.1 L (128 cu. in.)
Rated Engine Speed	2,600 rpm
Torque Rise	16% at 1,690 rpm
Aspiration	Turbocharged
Air Cleaner	Dry dual element
Cooling	
Fan Type	Direct belt drive
Powertrain	
Pump	Axial-piston hydrostatic
Motors	Axial-piston hydrostatic
Single Speed	11.3 km/h (7.0 mph)
Gearbox	High-drive direct-drive motor
Brakes	Integral, automatic, spring-applied, hydraulically released, wet-disc park brake
Undercarriage	
Rubber Tracks	Smooth-ride long-life rubber with steel inserts
Ground Pressure	
With Standard 320-mm (12.6 in.) Track	38 kPa (5.5 psi)
With Optional 400-mm (15.8 in.) Wide Track	31 kPa (4.5 psi)
Track Rollers (per side)	4 triple-flange smooth-ride all-steel rollers
Track Idlers (per side)	1 double-flange and 1 single-flange smooth-ride all-steel rollers
Bearings/Seals (rollers/idlers)	Heavy-duty journal bearings and metal face seals
Tractive Effort	3632 kgf (8,000 lbf)
Hydraulics	
Type	3-spool open-center valve
Pump Flow, Standard	63 L/m (17 gpm)
System Pressure at Couplers	23 787 kPa (3,450 psi)
Hydraulic Horsepower (calculated)	25 kW (33 hp)
Auxiliary Hydraulics	Standard connect-under-pressure with flat-faced couplers
Cylinders	
Type	John Deere heat-treated, chrome-plated, polished cylinder rods, hardened steel (replaceable bushings) pivot pins
Electrical	
Voltage	12 volt
Number of Batteries	1
Capacity	
Battery	750 CCA standard / 925 CCA with optional cold weather start package
Reserve	180 min.
Alternator Rating	70 amp with no air conditioning (A/C) / 90 amp with A/C
Lights	
Standard	Halogen: 2 front and 1 rear
Deluxe (optional)	LED: 2 front, 2 side, and 1 rear

317G

SPECIFICATIONS



Operator's Station 317G
ROPS (ISO 3471) / FOPS (ISO 3449) structure with quick pivot standard; keyless-start option with sealed-switch module

Serviceability

Refill Capacities

Fuel Tank	71 L (19 gal.)
Cooling System	12 L (12.7 qt.)

Operating Weights

With Standard 320-mm (12.6 in.) Track	3824 kg (8,423 lb.)
With Optional 400-mm (15.8 in.) Wide Track	3942 kg (8,683 lb.)

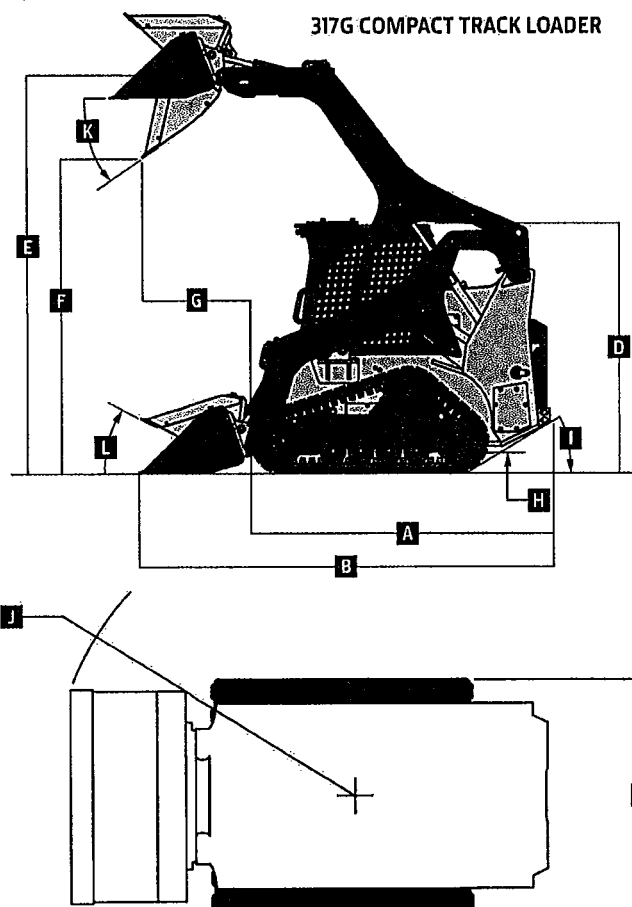
Machine Dimensions

A Length Without Bucket	2.63 m (103.0 in.) (8 ft. 7 in.)
B Length	
With Foundry Bucket	3.24 m (127.6 in.) (10 ft. 8 in.)
With Construction Bucket	3.49 m (137.4 in.) (11 ft. 5 in.)
C Width Without Bucket	
With Standard 320-mm (12.6 in.) Track	1.65 m (65.1 in.) (5 ft. 5 in.)
With Optional 400-mm (15.8 in.) Track	1.82 m (71.5 in.) (5 ft. 11 in.)
D Height to Top of ROPS	1.99 m (78.5 in.) (6 ft. 6 in.)
E Height to Hinge Pin	3.07 m (121.0 in.) (10 ft. 1 in.)
F Dump Height	
With Foundry Bucket	2.43 m (95.6 in.) (8 ft. 0 in.)
With Construction Bucket	2.26 m (89.0 in.) (7 ft. 5 in.)
G Dump Reach	
With Foundry Bucket	0.79 m (31.0 in.)
With Construction Bucket With Edge	0.98 m (38.6 in.) (3 ft. 3 in.)
H Ground Clearance	0.21 m (8.3 in.)
I Angle of Departure	32.3 deg.
J Front Turn Radius With Foundry Bucket	1.97 m (77.7 in.) (6 ft. 6 in.)
K Dump Angle (full lift height)	42 deg.
L Bucket Rollback (ground level)	30 deg.

Loader Performance

Tipping Load	2756 kg (6,070 lb.)
SAE Rated Operating Capacity	
At 35% Tipping Load	965 kg (2,125 lb.)
At 50% Tipping Load	1378 kg (3,035 lb.)
With Counterweight	1022 kg (2,250 lb.)
Boom Breakout Force	
With Foundry Bucket	2384 kg (5,250 lb.)
With Construction Bucket	2270 kg (5,000 lb.)
Bucket Breakout Force	
With Foundry Bucket	2724 kg (6,000 lb.)
With Construction Bucket	1930 kg (4,250 lb.)

317G COMPACT TRACK LOADER



Additional equipment

Key: ● Standard ▲ Optional or special See your John Deere dealer for further information.

312GR	314G	316GR	318G	317G	Engine
SSL	SSL	SSL	SSL	CTL	
●	●	●	●	●	Meets EPA Final Tier 4/EU Stage IV emissions
●	●	●	●	●	Yanmar 4TNV86CT
●	●	●	●	●	Yanmar 4TNV86CHT
●	●	●	●	●	Auto-idle
●	●	●	●	●	Automatic preheat
●	●	●	●	●	Electronic injection system
▲	▲	▲	▲	▲	Engine air precleaner kit
●	●	●	●	●	Fuel tank, 71 L (19 gal.)
●	●	●	●	●	John Deere COOL-GARD™ II Extended-Life Engine Coolant
●	●	●	●	●	John Deere Plus-50™ II OW40 initial engine oil fill*
●	●	●	●	●	4-cylinder 37.8 kW (51 gross hp)/35.8 kW (48 net hp), 2.1-L (128 cu. in.) displacement
●	●	●	●	●	4-cylinder 48.5 kW (65 gross hp)/45.6 kW (61 net hp), 2.1-L (128 cu. in.) displacement
●	●	●	●	●	5-micron primary fuel filter and water separator
▲	▲	▲	▲	▲	Cold-weather starting package with 925-CCA battery
Cooling System					
●	●	●	●	●	Coolant overflow bottle recovery tank
●	●	●	●	●	Direct belt-drive cooling fan system
●	●	●	●	●	No-tools-required swing-out oil cooler
Powertrain					
●	●	●	●	●	High-strength adjustment-free final-drive chains
●	●	●	●	●	High-drive direct-drive motor
●	●	●	●	●	Automatic spring-applied hydraulically released wet-disc park brake
●	●	●	●	●	Transmission, single speed
●	●	▲	▲	●	Transmission, 2 speed

312GR	314G	316GR	318G	317G	Hydraulic System
SSL	SSL	SSL	SSL	CTL	
●	●	●	●	●	John Deere heat-treated, chrome-plated cylinder rods with replaceable bushings
▲	▲	▲	▲	●	Connect-under-pressure auxiliary couplers
●	●	●	●	●	Quick-check hydraulic fluid-level sight glass
●	●	●	●	●	1,000-hour, 5-micron hydraulic filter
●	●	●	●	●	Axial-piston hydrostatic pump
Electrical					
●	●	●	●	●	Automatic engine/hydraulic shutdown protection system
●	●	●	●	●	Auxiliary hydraulics operator-presence system
●	●	●	●	●	Courtesy lighting
●	●	●	●	●	Deluxe instrumentation EMU with: Operator-selectable monitoring – Hour meter, engine rpm, battery voltage, diagnostics, EMU configuration, engine coolant temperature, hydraulic oil temperature / LED warning indicators – Glow plug, seat switch, seat belt, door open, auxiliary hydraulics, park brake engaged, 2-speed engaged, stop, low engine oil pressure, engine coolant over-temperature, battery not charging, air filter restriction, hydraulic filter restriction
●	●	▲	▲	▲	Deluxe LED lighting package with additional side lights (2)
●	●	●	●	●	Front and rear halogen work lights
●	●	●	●	●	Triple-interlock operator-presence control system
●	●	●	●	●	Backup alarm
●	●	●	●	●	Battery, 750 CCA
●	●	●	●	●	Horn

*500-hour engine oil-change intervals when John Deere Plus-50 II oil and John Deere oil filter are used.

Net engine power is with standard equipment including air cleaner, exhaust system, alternator, and cooling fan, at standard conditions per SAE J1349 and DIN 6270B, using No. 2-D fuel at 35 API gravity. Gross power is without cooling fan. Specifications and design subject to change without notice. Wherever applicable, specifications are in accordance with SAE standards. Except where otherwise noted, these specifications are based on units with standard equipment, full fuel tanks, and 79-kg (175-lb.) operator.

Additional equipment *(continued)*

Key: ● Standard ▲ Optional or special See your John Deere dealer for further information.

312GR SSL	314G SSL	316GR SSL	318G SSL	317G CTL	Operator's Station
●	●	●	●	●	Deluxe cab headliner
▲	▲	▲	▲	▲	Keyless-start sealed-switch module with integrated anti-theft system
●	●	●	●	●	Pull-down adjustable lap bar
●	●	●	●	●	Quick-pivot ROPS
●	●	●	●	●	Rear window
●	●	●	●	●	Top window
●	●	●	●	●	Removable top window
▲	▲	▲	▲	▲	Vinyl cab enclosure
▲	▲	▲	▲	▲	Glass cab enclosure
▲	▲	▲	▲	▲	Sliding/locking/removable glass side windows
●	●	●	●	●	ROPS/FOPS operator structure
●	●	●	●	●	Seat belt, 51-mm (2-in.), retractable
▲	▲	▲	▲	▲	Seat belt, 76-mm (3-in.), retractable
▲	▲	▲	▲	▲	Shoulder belt
●	●	●	●	●	Water-shedding deluxe vinyl seat
▲	▲	▲	▲	▲	Deluxe vinyl suspension seat
▲	▲	▲	▲	▲	Air-ride cloth, heated seat
●	●	●	●	●	Air-ride vinyl seat
●	●	●	●	●	12-volt power port / Dome light / Cargo storage / Beverage holder
▲	▲	▲	▲	▲	Air conditioning with heater/defroster
▲	▲	▲	▲	▲	Heater with defroster
▲	▲	▲	▲	▲	AM/FM radio with Bluetooth® for audio streaming
▲	▲	▲	▲	●	Electrohydraulic (EH) ISO-pattern joystick controls
▲	▲	▲	▲	▲	EH joystick performance package: Switchable ISO-H pattern / Creeper mode / Boom/bucket speed settings / Adjustable propel settings / Attachment controls
●	●	●	●	●	Manual foot and hand controls
▲	▲	▲	▲	▲	Floor mat with left footrest
●	●	●	●	●	Rearview mirror

312GR SSL	314G SSL	316GR SSL	318G SSL	317G CTL	Operator's Station <i>(continued)</i>
▲	▲	▲	▲	▲	Severe-duty cab door and wiper system
▲	▲	▲	▲	▲	Boom-mounted side mirrors
▲	▲	▲	▲	▲	Rearview camera
Loader					
●	●	●	●	●	In-cab boom lockout to secure loader before exiting seat
●	●	●	●	●	John Deere Quik-Tatch™
▲	▲	▲	▲	▲	Power Quik-Tatch
●	●	●	●	●	John Deere radial-lift boom
▲	▲	▲	▲	▲	John Deere vertical-lift boom
▲	▲	▲	▲	▲	Hydraulic self-leveling on/off
▲	▲	▲	▲	▲	Hydraulic self-leveling on/off and ride control
Other					
●	●	●	●	●	Convenient front (1) and rear (2) tie-downs
●	●	●	●	●	Environmental drains for all fluid reservoirs
▲	▲	▲	▲	▲	10 x 16.5 10 PR Galaxy "Beefy Baby III" heavy-duty (HD) tires for 1.52-m (60 in.) machine width
▲	▲	▲	▲	▲	Tire options: SKS Xtra Wall, Galaxy Beefy Baby III, Galaxy Hulk, and Brawler Solid-Flex
▲	▲	▲	▲	●	320-mm (12.6 in.) tracks, 1.73-m (68 in.) wide machine stance
▲	▲	▲	▲	▲	320-mm (12.6 in.) tracks, 1.65-m (65 in.) narrow machine stance
▲	▲	▲	▲	▲	400-mm (15.8 in.) tracks, 1.80-m (71 in.) wide machine stance
▲	▲	▲	▲	▲	Chrome exhaust stack
▲	▲	▲	▲	▲	Rear counterweights (2), 45.36 kg (100 lb.)
▲	▲	▲	▲	▲	Single-point lift kit
▲	▲	▲	▲	▲	SMV sign kit
▲	▲	▲	▲	▲	Spare tire and wheel

Net engine power is with standard equipment including air cleaner, exhaust system, alternator, and cooling fan, at standard conditions per SAE J1349 and DIN 62708, using No. 2-D fuel at 35 API gravity. Gross power is without cooling fan. Specifications and design subject to change without notice. Wherever applicable, specifications are in accordance with SAE standards. Except where otherwise noted, these specifications are based on units with standard equipment, full fuel tanks, and 79-kg (175-lb.) operator.



Bobcat®

Product Quotation

Quotation Number: 28418D028497

Date: 2020-04-09 15:55:34

Ship to	Bobcat Dealer	Bill To
City of Coleraine Attn: Steve Campbell 302 Roosevelt Ave Coleraine, MN 55722 Phone: (218) 259-9503	Bobcat of Duluth Inc, Duluth, MN 4610 WEST ARROWHEAD ROAD DULUTH MN 55811 Phone: (218) 727-7377 Fax: (218) 727-8889 ----- Contact: Mike Mahoney Phone: 218-727-7377 Fax: 218-727-8889 Cellular: 218-393-6320 E Mail: mike@bobcatofduluth.com	City of Coleraine Attn: Steve Campbell 302 Roosevelt Ave Coleraine, MN 55722 Phone: (218) 259-9503

Description	Part No	Qty	Price Ea.	Total
T595 T4 Bobcat Compact Track Loader	M0249	1	\$43,035.00	\$43,035.00
P69 Performance Package	M0249-P06-P69	1	\$5,384.60	\$5,384.60
Power Bob-Tach	Hydraulic Bucket Positioning			
7-Pin Attachment Control Kit	Automatic Ride Control			
High Flow	Reversing Fan			
2-Speed				
C37 Comfort Package	M0249-P07-C37	1	\$4,890.60	\$4,890.60
Enclosed Cab with AC/Heat	Deluxe Instrument Panel with Keyless Start			
Sound Reduction	Radio			
Cab Accessories Package	Heated Cloth Air Ride Suspension Seat			
Selectable Joystick Controls (SJC)	M0249-R01-C04	1	\$604.20	\$604.20
16" C-Pattern Rubber Track	M0249-R09-C02	1	\$1,190.16	\$1,190.16
Roller Suspension Undercarriage	M0249-R21-C13	1	\$1,289.72	\$1,289.72
Telematics US	M0249-R51-C02	1	\$0.00	\$0.00
Total of Items Quoted				\$56,394.28
Quote Total - US dollars				\$56,394.28

Notes:

All prices subject to change without prior notice or obligation. This price quote supersedes all preceding price quotes.

Customer Acceptance:

Purchase Order: _____

Authorized Signature:

Print: _____ Sign: _____ Date: _____

Equip - 317 JD



Product Quotation

Quotation Number: 28418D028499

Date: 2020-04-09 15:47:30

Ship to	Bobcat Dealer	Bill To
City of Coleraine Attn: Steve Campbell 302 Roosevelt Ave Coleraine, MN 55722 Phone: (218) 259-9503	Bobcat of Duluth Inc, Duluth, MN 4610 WEST ARROWHEAD ROAD DULUTH MN 55811 Phone: (218) 727-7377 Fax: (218) 727-8889 ----- Contact: Mike Mahoney Phone: 218-727-7377 Fax: 218-727-8889 Cellular: 218-393-6320 E Mail: mike@bobcatofduluth.com	City of Coleraine Attn: Steve Campbell 302 Roosevelt Ave Coleraine, MN 55722 Phone: (218) 259-9503

Description	Part No	Qty	Price Ea.	Total
74" Heavy Duty Bucket	7272680	1	\$855.00	\$855.00
--- Bolt-On Cutting Edge, 74"	6718007	1	\$260.00	\$260.00
68" Angle Broom	7337703	1	\$4,265.88	\$4,265.88
SB200 Snowblower - 72" Width	M7003	1	\$3,798.48	\$3,798.48
--- 9.6 Hyd Motor Package (25 - 31 gpm)	M7003-R01-C04	1	\$955.32	\$955.32

Total of Items Quoted	\$10,134.68
Quote Total - US dollars	\$10,134.68

Notes:

All prices subject to change without prior notice or obligation. This price quote supersedes all preceding price quotes.

Customer Acceptance:

Purchase Order: _____

Authorized Signature:

Print: _____ Sign: _____ Date: _____



City of Coleraine
Coleraine MN
Attn: Harry

McCoy Construction & Forestry is pleased to quote on a new 2020 John Deere 325G equipped as follows:

- 2020 John Deere 325G Compact Track Loader
- Yanmar Turbocharged 4 Cylinder Diesel Engine (74hp)
- Two Speed
- Cab w/ Heat, Air Conditioning, & Defrost
- Switchable E/H Control w/ Performance Package
- High Flow Hydraulics (27 GPM)
- Wide 15.8" Zig Zag Style Rubber Tracks
- Power Quick Attach
- 2" Seat Belt w/ Shoulder Strap
- Vinyl Air Suspension Seat
- Cold Start Packager
- Radio AM/FM w/ Bluetooth
- Keyless Start w/ Sealed Switch Module
- HD 78" Construction Bucket w/ Edge
- John Deere 2 Year Full Machine Warranty
- John Deere 1 Year Extended Engine Warranty

Sell Price: **\$53,576**

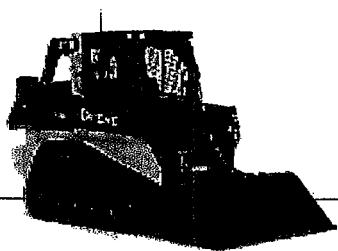
Optional Attachments:

John Deere Worksite Pro BA84C Angle Broom	\$6,154
John Deere Worksite Pro SB78H High Flow Snow Blower	\$10,648

- *priced per the Sourcewell Governmental Pricing Contract
- *machine availability is currently 90 days from date of order
- *quote expires in 30 days

Thank you for the opportunity to quote. Please contact me with any questions you may have.

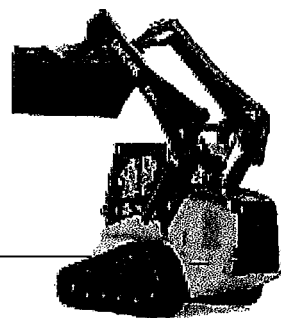
Jordan Thieschafer
Territory Manager
McCoy Construction & Forestry Inc.
218-910-0503



325G SPECIFICATIONS

Engine		325G
Manufacturer and Model	Yanmar 4TNV98CT	Yanmar 4TNV98T
Non-Road Emission Standard	EPA Final Tier 4/EU Stage IV	EPA Interim Tier 4/EU Stage IIIA
Cylinders	4	4
Gross Rated Power (ISO 14396)	54.8 kW (74 hp) at 2,500 rpm	55.0 kW (74 hp) at 2,500 rpm
Net Power (SAE J1349 / ISO 9249)	52.5 kW (70 hp) at 2,500 rpm	52.7 kW (71 hp) at 2,500 rpm
Peak Torque	280 Nm (207 lb.-ft.) at 1,800 rpm	284 Nm (209 lb.-ft.) at 1,800 rpm
Displacement	3.3 L (203 cu. in.)	3.3 L (203 cu. in.)
Rated Engine Speed	2,500 rpm	2,500 rpm
Torque Rise	34% at 1,800 rpm	36% at 1,800 rpm
Aspiration	Turbocharged	Turbocharged
Air Cleaner	Dry dual element	Dry dual element
Cooling		
Fan Type	Variable-speed hydraulic drive standard / reversing fan drive optional	
Powertrain		
Pump	Axial-piston hydrostatic	
Controls	Electrohydraulic	
Travel Speeds		
Single Speed, Standard	9.3 km/h (5.8 mph)	
2 Speed, Optional		
Low	8.4 km/h (5.2 mph)	
High	13.2 km/h (8.2 mph)	
Brake	Integral, automatic, spring-applied, hydraulically released wet-disc brake	
Undercarriage		
Rubber Tracks	Smooth-ride long-life rubber with steel inserts	
Track Width		
Standard	320 mm (12.6 in.)	
Optional	400 mm (15.8 in.)	
Ground Pressure		
Standard 320-mm (12.6 in.) Track	39.3 kPa (5.7 psi)	
Optional 400-mm (15.8 in.) Track	32.4 kPa (4.7 psi)	
Track Rollers (per side)	4 triple-flange smooth-ride all-steel rollers	
Track Idlers (per side)	2 double-flange smooth-ride all-steel rollers	
Bearings/Seals (rollers/idlers)	Heavy-duty journal bearings and metal face seals	
Tractive Effort	3859 kgf (8,500 lbf)	
Hydraulics		
Pump Flow		
Standard	70 L/m (19 gpm)	
Total with High-Flow Option	101 L/m (27 gpm)	
System Pressure at Couplers	23 787 kPa (3,450 psi)	
Hydraulic Horsepower Flow (calculated)		
Standard	27.9 kW (37.4 hp)	
High	40.1 kW (53.7 hp)	
Cylinders		
Type	John Deere heat-treated, chrome-plated polished cylinder rods, hardened steel (replaceable bushings) pivot pins	

325G SPECIFICATIONS



Electrical	325G
Voltage	12 volt
Battery Capacity	750 CCA standard / 925 CCA optional
Alternator Rating	75 amp
Lights	Halogen, 2 front and 1 rear

Operator's Station	
ROPS (ISO 3471) / FOPS (ISO 3449) structure with quick-pivot standard	

Serviceability

Refill Capacity	
Fuel Tank	79 L (21 gal.)

Operating Weights

	<i>EPA Final Tier 4/EU Stage IV and EPA Interim Tier 4/EU Stage IIIA</i>
With Standard 320-mm (12.6 in.) Track	4313 kg (9,500 lb.)
With Optional 400-mm (15.8 in.) Track	4381 kg (9,650 lb.)

Machine Dimensions

A Length without Bucket	2.85 m (112.3 in.) (9 ft. 4 in.)
B Length with Foundry Bucket	3.46 m (136.3 in.) (11 ft. 4 in.)
C Width without Bucket	
With 320-mm (12.6 in.) Track	1.82 m (71.5 in.) (6 ft. 0 in.)
With 400-mm (15.8 in.) Track	1.90 m (74.7 in.) (6 ft. 3 in.)
D Height to Top of ROPS	2.06 m (81.1 in.) (6 ft. 9 in.)
E Height to Hinge Pin	3.20 m (126.1 in.) (10 ft. 6 in.)
F Dump Height with Foundry Bucket	2.59 m (102.1 in.) (8 ft. 6 in.)
G Dump Reach	
With Foundry Bucket	0.75 m (29.7 in.)
With Construction Bucket with Edge	0.94 m (37 in.) (3 ft. 1 in.)
H Ground Clearance	0.24 m (9.3 in.)
I Angle of Departure	30.5 deg.
J Front Turn Radius with Foundry Bucket	2.03 m (80 in.) (6 ft. 8 in.)
K Dump Angle (full lift height)	41 deg.
L Bucket Rollback (ground level)	34 deg.

Loader Performance

	<i>EPA Final Tier 4/EU Stage IV and EPA Interim Tier 4/EU Stage IIIA</i>
Tipping Load	3360 kg (7,400 lb.)

SAE Rated Operating Capacity with Foundry Bucket

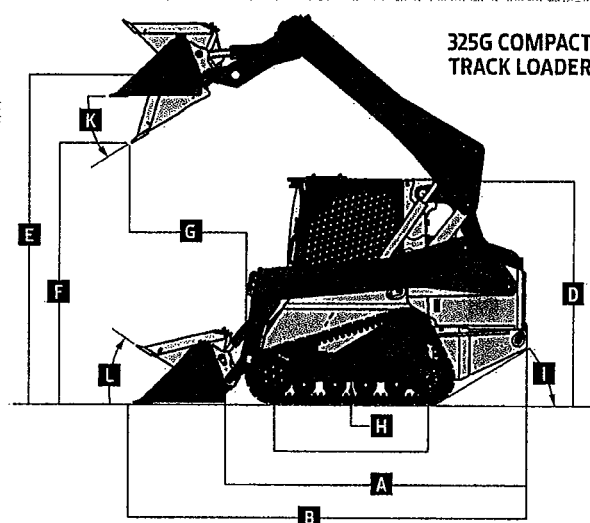
At 35% Tipping Load	1176 kg (2,590 lb.)
At 50% Tipping Load	1634 kg (3,600 lb.)

Boom Breakout Force

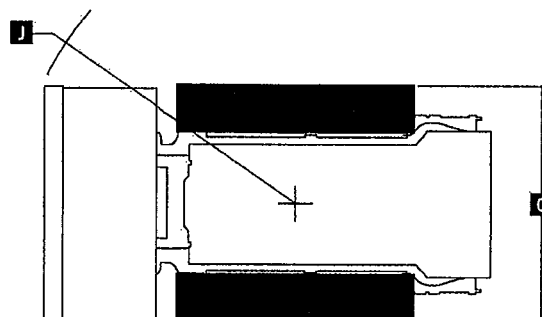
With Foundry Bucket	2384 kg (5,250 lb.)
With Construction Bucket	2154 kg (4,750 lb.)

Bucket Breakout Force

With Foundry Bucket	3973 kg (8,750 lb.)
With Construction Bucket	2724 kg (6,000 lb.)



**325G COMPACT
TRACK LOADER**



Additional equipment

Key: ● Standard ▲ Optional or special

See your John Deere dealer for further information.

325G	331G	333G	Engine
●	●	●	Meets EPA Final Tier 4/EU Stage IV emissions
▲			Meets EPA Interim Tier 4/EU Stage IIIB emissions
	▲	▲	Meets EPA Interim Tier 4/EU Stage IIIB emissions
●			Yanmar 4TNV98CT
▲			Yanmar 4TNV98T
	●	●	Yanmar 4TNV94FHT
	▲	▲	Yanmar 4TNV94CHT
●	●	●	Auto-idle
●	●	●	Automatic fan tensioner
●	●	●	Automatic preheat
●	●	●	Electronic injection system
▲	▲	▲	Engine air precleaner kit
●			Fuel tank, 79 L (21 gal.)
	●	●	Fuel tank, 114 L (30 gal.)
●	●	●	John Deere COOL-GARD™ II Extended-Life Engine Coolant ¹
●	●	●	John Deere Plus-50™ 10w30 initial engine oil fill ²
●			4-cylinder 54.8 kW (74 gross hp)/ 52.5 kW (70 net hp), 3.3-L (203 cu. in.) displacement
	●		4-cylinder 68.0 kW (91.2 gross hp)/ 66.0 kW (88.5 net hp), 3.1-L (186.3 cu. in.) displacement
	●		4-cylinder 74.6 kW (100 gross hp)/ 72.0 kW (96.6 net hp), 3.1-L (186.3 cu. in.) displacement
●	●	●	5-micron primary fuel filter and water separator
▲	▲	▲	Cold-weather starting package
Cooling System			
●	●	●	Coolant surge tank
●	●	●	Variable-speed hydraulically driven fan cooling system
▲	▲	▲	Reversing fan drive
Powertrain			
●	●	●	High-torque heavy-duty planetary-reduction final drive
●	●	●	Automatic spring-applied hydraulically released wet-disc park brake
●	●	●	Wet-disc brakes
●	●	●	Transmission, single speed
▲	●	●	Transmission, 2 speed
Hydraulic System			
●	●	●	John Deere hydraulic cylinders with cushioned boom cylinders
●	●	●	John Deere heat-treated, chrome-plated cylinder rods with replaceable bushings
●	●	●	Connect-under-pressure auxiliary couplers
●	●	●	Quick-check hydraulic fluid-level sight glass
●	●	●	1,000-hour, 5-micron hydraulic filter

325G	331G	333G	Hydraulic System (continued)
●	▲	▲	High-flow hydraulics
▲	●	●	Axial-piston hydrostatic pump
Electrical			
●	●	●	Automatic engine/hydraulic shutdown protection system
●	●	●	Auxiliary hydraulics operator-presence system
●	●	●	Courtesy lighting
●	●	●	Deluxe instrumentation EMU with: Operator-selectable monitoring – Hour meter, engine rpm, battery voltage, diagnostics, EMU configuration, engine coolant temperature, hydraulic oil temperature / LED warning indicators – Glow plug, seat switch, seat belt, door open, auxiliary hydraulics, park brake engaged, 2-speed engaged, stop, low engine oil pressure, engine coolant over-temperature, battery not charging, air filter restriction, and hydraulic filter restriction
▲	▲	▲	Deluxe LED lighting package with additional cab-integrated side lights (2)
●	●	●	Front and rear halogen work lights
●	●	●	Triple-interlock operator-presence control system
●	●	●	Backup alarm
●	●	●	Battery, 750 CCA
▲	●	●	Battery, 925 CCA
●	●	●	Horn
▲	▲	▲	Hazard warning lights
▲	▲	▲	Strobe light, amber
Operator's Station			
●	●	●	Deluxe cab headliner
●	●	●	Electrohydraulic (EH) ISO-pattern joystick controls
▲	▲	▲	ISO-H switchable joystick controls and EH joystick performance package*
	▲	▲	EH 4-way switchable controls include EH foot control, ISO joystick control, H-pattern joystick control, and ISO and foot controls
	▲	▲	ISO controls with programmable detents and EH boom performance package ³ ; also includes EH joystick performance package*
	▲	▲	Onboard grade indication: Grade-control option delivers onboard readout within LCD monitor that provides slope of blade (cross-slope direction) and mainfall (fore/aft direction) within ±0.5-percent accuracy
▲	●	●	Keyless-start sealed-switch module with integrated anti-theft system and operator memory preference settings
●	●	●	Electronic push-button auxiliary controls
●	●	●	Pull-down adjustable lap bar
●	●	●	Quick-pivot ROPS
●	●	●	Rear window

325G	331G	333G	Operator's Station (continued)
●	●	●	Removable top window
▲	▲	▲	Sliding/locking/removable glass side windows
●	●	●	ROPS/FOPS operator structure
▲	▲	▲	Glass cab enclosure
●	●	●	Seat belt, 51 mm (2 in.), retractable
▲	▲	▲	Shoulder belt, 51 mm (2 in.) or 76 mm (3 in.)
▲	▲	▲	Severe-duty cab door and wiper system
●	●	●	Water-shedding deluxe vinyl suspension seat
▲	▲	▲	Air-ride cloth, heated seat
▲	▲	▲	Air-ride vinyl seat
●	●	●	12-volt power port / Dome light / Cargo storage / Beverage holder
▲	▲	▲	Air conditioning with heater/defroster
▲	▲	▲	AM/FM radio with auxiliary input and Bluetooth® for audio streaming
▲	▲	▲	Floor mat with left footrest
●	●	●	Rearview mirror
▲	▲	▲	Rearview camera
Loader			
●	●	●	In-cab boom lockout to secure loader before exiting seat
●	●	●	Patented John Deere Quik-Tatch™ (no grease required)
▲	▲	▲	Power Quik-Tatch
●	●	●	Patented John Deere vertical-lift boom
▲	▲	▲	Hydraulic self-leveling on/off and ride control
Other			
●	●	●	Convenient front and rear tie-downs
●	●	●	Environmental drains for all fluid reservoirs
▲	▲	▲	Chrome exhaust stack
▲	▲	▲	Engine oil/hydraulic fluid-sampling kit
▲	▲	▲	Forestry protection packages
▲	▲	▲	Heavy-duty rear grille
▲	▲	▲	Rear counterweights (available in sets of 1, 2, or 3), 78 kg (172 lb.) (each set)
▲	▲	▲	Single-point lift kit
▲	▲	▲	SMV sign kit
●	●	●	Track, 320-mm (12.6 in.) wide
▲	●	▲	Track, 400-mm (15.8 in.) wide
▲	▲	●	Track, 450-mm (17.7 in.) wide
▲	▲	▲	JDLink™ wireless communication system (available in specific countries; see your dealer for details)

¹500-hour engine oil-change intervals when John Deere Plus-50 oil and John Deere oil filter are used.

²EH joystick performance package features switchable accelerator/decelerator, selectable propel speeds, creep control, boom- and bucket-speed settings, and 12-volt 3- and 14-pin attachment-control harness with dash-mounted 4th-function rocker switch.

³EH boom performance package features include EH bucket self-level up and down, return to dig, return to carry, and boom-height kick-out.



Net engine power is with standard equipment including air cleaner, exhaust system, alternator, and cooling fan, at standard conditions per SAE J1349 and DIN 62708, using No. 2-D fuel at 35 API gravity. Gross power is without cooling fan. Specifications and design subject to change without notice. Wherever applicable, specifications are in accordance with SAE standards. Except where otherwise noted, these specifications are based on units with standard equipment, full fuel tanks, and 79-kg (175-lb.) operator.

JohnDeere.com



Bobcat® of Duluth, Inc.

4610 W Arrowhead Rd
Duluth, MN 55811
(218)727-7377
(218)727-8889 FAX

Customer: City of Coleraine	Date: 4/9/2020
Address:	Tel:
City:	State: Zip Code: Fax:

Stock/SN	Make	Model	Description	Quantity	Price
1	Kubota	SVL75-HFWC		1	\$ 51,805.00
			Full Cab W. Heat and Air		
			Joystick Controls		
			16" Rubber Tracks		
			Block Heater, 2 Speed		
			High Flow Hydraulics		
			Suspension Seat, 14 Pin Attachment Kit		
	Land Pride	AP-HD74LLC		1	Inc
			74" Lo Profile Dirt Bucket and Edge		
		AP-SBL2574		1	\$ 6,530.00
			74" Snowblower		
		AP-AB72		1	\$ 4,600.00
			72" Hydraulic Angle Broom		
				Total	\$ 62,935.00

Trade In Equipment		
Stock/ SN	Description	Allowance
Less: Amount Owed to:		0
Net Trade In Allowance:		0

Manufacturers Warranty		Taxable Sub Total	\$ 62,935.00
Years		Sales Tax 0.000%	\$ -
Hours		Loan Filing Fees \$175	
(Whichever Occurs First)		Kubota Insurance	
Financing / Rebates		Extended Warranty	
Interest Rate		Delivery	
Length of Term		Net	\$ 62,935.00
Monthly Payment		Cash Down	\$ -
		Balance to Pay or Finance	\$ 62,935.00

Acceptance of Order	
Buyers Signature:	Sellers Name: Bobcat of Duluth
Title:	Sales Rep: Mike Mahoney
Date:	Date:

equiv to JD 325



Bobcat®

Product Quotation

Quotation Number: 28418D028498

Date: 2020-04-09 15:52:38

Ship to	Bobcat Dealer	Bill To
City of Coleraine Attn: Steve Campbell 302 Roosevelt Ave Coleraine, MN 55722 Phone: (218) 259-9503	Bobcat of Duluth Inc, Duluth, MN 4610 WEST ARROWHEAD ROAD DULUTH MN 55811 Phone: (218) 727-7377 Fax: (218) 727-8889 ----- Contact: Mike Mahoney Phone: 218-727-7377 Fax: 218-727-8889 Cellular: 218-393-6320 E Mail: mike@bobcatofduluth.com	City of Coleraine Attn: Steve Campbell 302 Roosevelt Ave Coleraine, MN 55722 Phone: (218) 259-9503

Description	Part No	Qty	Price Ea.	Total
T76 T4 Bobcat Compact Track Loader	M0371	1	\$51,198.16	\$51,198.16
P69 Performance Package	M0371-P06-P69	1	\$6,107.36	\$6,107.36
"Power Bob-Tach	Dual Direction Bucket Positioning			
7-Pin Attachment Control	Automatic Ride Control			
High Flow	Reversing Fan"			
Two-Speed				
C68 Comfort Package	M0371-P07-C68	1	\$5,602.72	\$5,602.72
"Enclosed Cab with HVAC	Heated Cloth Air Ride Suspension Seat			
Sound Reduction	Premium LED Lights			
	Rear View Camera"			
Touch Display				
17.7" Multi Bar Track	M0371-R09-C05	1	\$1,262.36	\$1,262.36
5-Link Torsion Suspension Undercarriage	M0371-R21-C13	1	\$1,886.32	\$1,886.32
Total of Items Quoted				\$66,056.92
Quote Total - US dollars				\$66,056.92

Notes:

All prices subject to change without prior notice or obligation. This price quote supersedes all preceding price quotes.

Customer Acceptance:

Purchase Order: _____

Authorized Signature:

Print: _____ Sign: _____ Date: _____

Equio to JD 325



Product Quotation

Quotation Number: 28418D028500

Date: 2020-04-09 15:49:11

Ship to	Bobcat Dealer	Bill To
City of Coleraine Attn: Steve Campbell 302 Roosevelt Ave Coleraine, MN 55722 Phone: (218) 259-9503	Bobcat of Duluth Inc, Duluth, MN 4610 WEST ARROWHEAD ROAD DULUTH MN 55811 Phone: (218) 727-7377 Fax: (218) 727-8889 ----- Contact: Mike Mahoney Phone: 218-727-7377 Fax: 218-727-8889 Cellular: 218-393-6320 E Mail: mike@bobcatofduluth.com	City of Coleraine Attn: Steve Campbell 302 Roosevelt Ave Coleraine, MN 55722 Phone: (218) 259-9503

Description	Part No	Qty	Price Ea.	Total
84" Angle Broom	7337715	1	\$4,646.64	\$4,646.64
80" Severe Duty Bucket	7326129	1	\$1,232.72	\$1,232.72
--- Bolt-On Cutting Edge, 80"	6718008	1	\$280.00	\$280.00
SB200 Snowblower - 78" Width	M7004	1	\$4,027.24	\$4,027.24
--- 9.6 Hyd Motor Package (25 - 31 gpm)	M7004-R01-C04	1	\$955.32	\$955.32

Total of Items Quoted	\$11,141.92
Quote Total - US dollars	\$11,141.92

Notes:

All prices subject to change without prior notice or obligation. This price quote supersedes all preceding price quotes.

Customer Acceptance:

Purchase Order: _____

Authorized Signature:

Print: _____ Sign: _____ Date: _____



OUTLET STORE

830 LILY LANE ♦ GRAND RAPIDS ♦ MN ♦ 55744 ♦ 218-326-3752

DATE: 4/9/2020

PO:

SALESPERSON: LANCE SCHJENKEN

NEW CUSTOMER REQUIRES CREDIT APPLICATION

PAYMENT TERMS: CASH/CHECK

EQUIPMENT SALES QUOTE/ORDER FORM

NAME / BUSINESS:	CITY OF COLERAINE				
STREET ADDRESS:					
CITY:	COLERAINE	STATE:	MN	ZIP CODE:	
HOME PHONE:			CELL PHONE:		
SHIP TO LOCATION:	CUSTOMER PICK UP				

QTY	NEW / USED	SERIAL #	PART #	DESCRIPTION	AMOUNT
1	NEW		4002-143	2020 RT-75, A.W.C., PREM., PLUS HYD.	\$ 61,317.75
1	NEW		0404-140	74" DIRT BUCKET WITH B.O.C.E.	\$ -
				INCLUDED IN PRICE	
				PRICE INCLUDES 25% DISCOUNT	
				PLUS 7500 DOLLAR REBATE	

TRADE IN DESCRIPTION AND OR COMMENTS

(MODEL, SERIAL #, HOURS, ATTACHMENTS, ETC)

SUBTOTAL \$ \$ 61,317.75

NET TRADE IN ALLOWANCE \$

WARRANTY ON EQUIPMENT

FROM: DATE OF PURCHASE TO: 3YRS./3000 HRS.

TAX EXEMPT
YES

LESS RENTALS PAID \$

TAXABLE TOTAL \$ \$ 61,317.75

SALES TAX \$ \$ -

FREIGHT \$

NET \$ \$ 61,317.75

CASH DOWN \$

BALANCE DUE \$ \$ 61,317.75

BUYER AGREES TO ALL TERMS AND CONDITIONS OF SALES SET FORTH IN THIS AGREEMENT.

BUYERS SIGNATURE:

ACCEPTANCE OF ORDER:

SELLERS SIGNATURE:

COMMENTS/ADDITIONAL INSTRUCTIONS:

ALL TERMS AND CONDITIONS OF SALE IN THE PAGES TO FOLLOW ARE A PART HEREOF AND BINDING UPON THE PARTIES HERETO. BUYER HAS READ AND AGREES TO ALL OF THE TERMS AND CONDITIONS OF SALE IN THE PAGES TO FOLLOW. THIS SALES ORDER ACKNOWLEDGEMENT MUST BE SIGNED AND RETURNED TO SELLER IN ORDER FOR YOUR ORDER TO BE SCHEDULED FOR PRODUCTION.